



# SILVERLOCK WARD

## Pop-up art gallery

# Spring/Summer Catalogue

**May – August 2025**  
**All works for sale from catalogue**

Next pop-up Autumn 2025  
[www.silverlockwardgallery.london](http://www.silverlockwardgallery.london)

## Silverlock Ward Gallery

We are a contemporary art gallery exhibiting some of the most inspiring and exciting artists of our time.

We do different!

We bring you three catalogues and three pop-up exhibitions each year.

We invite you to buy from the catalogue all year round.

At any point we can arrange a meeting with the artists, online or in person, to talk to them about their work.

We can also arrange for an artwork to live in your home before buying.

Once you've reviewed the catalogue and chosen your favourite pieces, either buy from the catalogue or come to one of our pop-ups.

**To buy any piece of work,  
contact:**

Chris Ward, Co-Founder and Curator  
07973 548766

[chris@silverlockwardgallery.london](mailto:chris@silverlockwardgallery.london)

Or

Nicki Silverlock, Co-Founder and Curator  
07917 083236

[nicki@silverlockwardgallery.london](mailto:nicki@silverlockwardgallery.london)





## Buy from us to create a fairer, more sustainable world for artists

**Silverlock Ward Gallery** is a new entrant to the gallery space.

Inspired by the UK's creative heritage and the movement to democratise the arts, we have set out to find and nurture talented contemporary artists whose work inspires, excites and uplifts.

We believe passionately in the transformative power of art – in the home, in the workplace, in public spaces – and seek to break down the perceived or real barriers to a 'love of art' erected over the years by a layering of analysis, critiques and art intellectualism. This serves largely to distance the viewer from the experience sought by the artist.

We are committed to a fairer, more sustainable environment for artists to thrive and bring affordable, original art to everyone.

For every original piece of art sold, we will return a greater percentage of the sale than our peers to the artist, as well as donate a percentage to a charity fund set up to help underprivileged young artists.

We commit to bringing you artists and their art that we believe will move and inspire you.





## Isao Miura

Isao is a Zen painter and sculptor (working mostly in oils, bronze, paper and wood) who hails from the north of Japan but is based in London. He trained at the Chelsea School of Art and then at the Royal College of Art, where he studied under Ken Kiff. He was the first painter to be appointed as a Fellow in the bronze foundry at Chelsea College of Arts.

"I grew up on a 300-year-old rice farm in Akita, north Japan. Now my paintings and sculpture seek to explore our human relationships with Mother Earth – her seasons, weathers, grains – and with creatures like donkeys, dogs and fireflies who share the Earth with us. I do not create my work as an effort of campaigning or protest, but it springs from my roots in an organic and non-toxic agriculture and way of life.

"My work tries to focus and simplify the thoughts in my head down to a shimmering image, a sort of encounter between the self and not-self which uses the vibrancy of colour, line and texture to convey emotion. Many of my paintings are set in early morning or evening, depicting moments of departure or arrival, of a chance meeting or sleep. The shapes and colours I paint are neither purely figurative nor abstract but a sort of symbolism."



## Jon Raine

Jon Raine's fine art practice revolves around re-evaluating our perception of reality. Consistently captivated by the creation of concepts that offer fresh interpretations of our world, his work prompts us to perceive it in unique ways.

His virtual and 3D-printed light sculptures are computer generated, but crafted using the capture of scans and photographs from the real world. This fusion of virtual and physical realities allows us to see light in a solid form.

His indecipherable sculptures focus on neurodivergence, particularly literacy and dyslexia. The sculptures aim to initiate conversations about neurodivergence and challenge existing perceptions.

The sculptures consist of mixed-up words, sayings and sentences, with the letters fused, making their content nearly impossible to decipher, inviting the viewer to engage in a process of unpuzzling their meaning. Each work is a visual onomatopoeia made from the letters of its title.

As a neurodivergent individual, Raine aims to transform our perception and enhance society's valuing of, and accommodation for, individuals who are on the spectrum.



## Will Sudding

"Learn the rules like a pro, so you can break them like an artist' is a quote attributed to Picasso that really speaks to me, and I have felt connected with it along my art journey.

"Since a young age, the desire to get as realistic as possible in my paintings has partly driven my passion. I like to push my boundaries

and, in a way, "break them like an artist". Whilst I am no Picasso, in my own small ways I have experimented, with my style deferring from pure realism. The media I specialise in is oil painting and I get inspiration from all walks of life. Scenery from my travels; thoughts, feelings and emotions from my friends and family; and, of course, the portfolios of the many amazing artists who are out there."



## Jenny Cowderoy

Jenny's work is focused on using abstraction to depict the beauty of the imperfect and the impermanence of life. Landscapes, river and water scenes, still lives and portraits, all represent the balance between beauty and decay, the transformation inherent in nature. Long influenced by Japanese art, in particular the aesthetic of wabi-sabi, Jenny delights in the beauty of the old over new, autumn over summer; real life, true character and unpolished reality. Her process involves repeated manipulation and transformation until her works are beautifully imperfect.

"I create expressive and original oil paintings, driven by a love of colour and pattern and all painted from imagination. Although inspired by nature and the inherent beauty and imperfection of the natural world, each piece is more of an emotional landscape than a depiction of reality. My work is in many private collections globally and has been exhibited in galleries across the UK.

"My studio is in Bath and my work has become a favourite of interior designers and architects in the South West. For me, a piece of art should be something you want to live with for a long time. The best art describes the inner world and unique perspective of the artist; it changes and grows with its owner over time and takes on meaning from the people and home it lives in."



## Hugo Lines

"I work in both traditional and digital mediums and originally trained as a graphic artist and spent many years working as a designer and art director in London advertising agencies. My passion for photography and attempting to capture the extraordinary in the 'ordinary' of both daily life and wider travels eventually led me back to my

first love of drawing and painting.

"From 2005 to 2007, I attended the Royal Drawing School and after graduating, I relocated to Devon to set up my own studio.

"I'm interested in the stories unfolding within defined spaces and my aim is to draw viewers into a rich experience as they move from one image to the next. I find the play and contrast between the interior and exterior particularly fascinating. The subject could be the stillness of a seemingly empty room or the dynamic light in a wooded landscape."



## Malcolm Leyland

The composite imagery in Mal's work allow him to represent how we see the world around us. We rarely stand still and focus on a single composed view; we adjust our eyes, shift our viewpoints and see many images at the same time. Mal creates composites using archival pigment ink on fine art paper. There is no digital manipulation; all images

are as captured with a camera. The composites are loosely attached to heavy-duty, acid-free art paper or card, and the paper's textural quality is crucial.

"As a professional photographer, I specialised in still-life advertising and was commissioned by many well-known agencies and publications. Throughout the 1980s and 1990s, I built a reputation for a unique approach to visual messaging for brands. Today, having abandoned commercial work, I am focused solely on developing my early ideas, building on my aesthetic, and experimenting with the medium, pushing the boundaries as far as I can. My work is about distraction and memory as an artistic, poetic experience. To be slow in a hurricane of life; to be contemplative, moved. Part of my curiosity is to look beyond the conventional 'single viewpoint/stolen moment' framework typically defined by the camera. For many, this is the creative end goal. For me, it is just the beginning. Meaning is less important to me than experience."



## Diikii

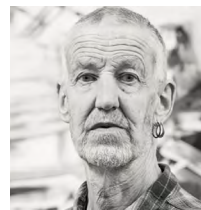
Diikii's work is primarily illustrative, using bright and bold colour palettes and hand-drawn textures as well as an interactive layer, where possible, with moving pictures and animation.

"I am an independent illustrator and printmaker based in London. I experiment with a combination of brush pens, inks and pencils

as well as graphic shapes and tones in both analogue and digital formats. It's always interesting to see how each technique comes together to achieve the final result.

"I have a keen interest in how pictorial language connects to semantics, particularly through the lens of animals and pictographs. My work explores the ways icons can convey meaning, emotion and narrative.

"I primarily work with hand-drawn techniques, allowing for organic, imperfect shapes that reflect the tactile process of printmaking."



## Barry Cooper

"I have been working as a painter since 1970 and in 1985, at the age of 40, I began an MA degree in painting at the Royal College of Art, studying with Peter de Francia and John Golding, who was a leading authority on Cubism.

"In my painting I have retained an interest in the fragmentation of the image, which I continue to find in a fractal space created through planes and elisions inherited from Cubism. Whilst always yearning for a minimalist simplicity, the noise of the outside world continuously breaks in.

"The dominance of the unrepeatable mark is a constant, exploring the three dimensional through the layering of paint. The fourth dimension of time in painting, through collaborating with musicians, has always been present and is extended in live improvisations. Performing with jazz pianist John Law explored that space found in earlier monochromatic abstractions. Chaos is never far from the surface; surrounded by the destruction of life in the wider world and viewed from the perspective of the comparative paradise that has been my lifetime in the UK since 1945."



**Archetypes 3**  
152 x 213cm

**BARRY COOPER**  
£2,550



**Cycladic Couple 3**  
91 x 59cm

**BARRY COOPER**  
£1,786



**Archetypes 4**  
152 x 213cm

**BARRY COOPER**  
£2,550



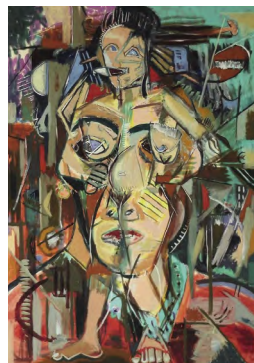
**Musician 1**  
121 x 152cm

**BARRY COOPER**  
£1,683



**Archetypes 7**  
213 x 152cm

**BARRY COOPER**  
£2,550



**SpaceTime 2**  
121 x 152cm

**BARRY COOPER**  
£1,683

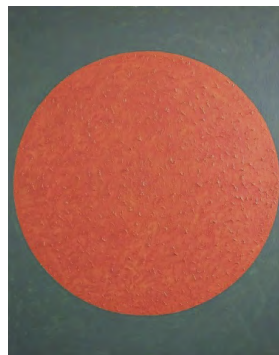


***SpaceTime 3***  
121 x 152cm  
**BARRY COOPER**  
£1,683



***Layers***  
91 x 73cm

**BARRY COOPER**  
£1,785



***SpaceTime 7***  
121 x 152cm  
**BARRY COOPER**  
£1,683



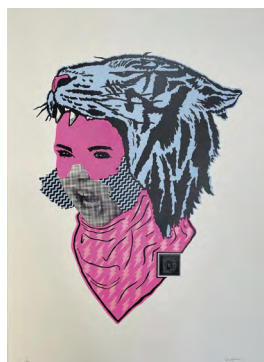
***Layers 3***  
91 x 74cm

**BARRY COOPER**  
£1,785



***Tiger Lily Zapper***  
All prints are  
70 x 50cm  
SWG Limited Edition of 50

**DIKII**  
£286



***Tiger Lily Stars***  
All prints are  
70 x 50cm  
SWG Limited Edition of 50

**DIKII**  
£286

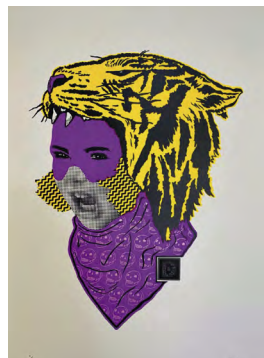






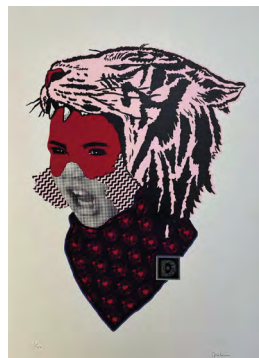
***Tiger Lily Sugar Skulls***  
All prints are  
70 x 50cm  
SWG Limited Edition of 50

**DIIKII**  
£286



***Tiger Lily Love Bomb***  
All prints are  
70 x 50cm

**DIIKII**  
£286



***Tiger Lily Snake***  
All prints are  
70 x 50cm

**DIIKII**  
£286



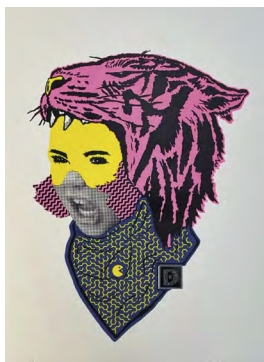
***Tiger Lily Light It Up***  
All prints are  
70 x 50cm

**DIIKII**  
£286



***Tiger Lily Pac-Man***  
All prints are  
70 x 50cm

**DIIKII**  
£286



***Tiger Lily Disco Smiley***  
All prints are  
70 x 50cm

**DIIKII**  
£286





**Tiger Lily Chops**  
All prints are  
70 x 50cm  
SWG Limited Edition of 50

DIIKII  
£286



**Tiger Lily Cheetah**  
All prints are  
70 x 50cm

DIIKII  
£286



**Around Haytor  
No6**

21 x 29cm,  
framed size  
22 x 30cm  
Acrylic paint  
on card

HUGO LINES  
£765



**Bonehill No2**

21.7 x 28.8cm,  
framed size  
22.7 x 29.8cm  
Acrylic paint  
on card

HUGO LINES  
£765



**Looking Out from  
Hound Tor No2**

21 x 28.7cm,  
framed size  
22 x 29.7cm  
Acrylic paint on card

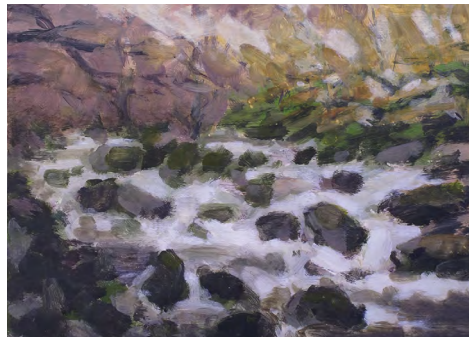
HUGO LINES  
£765



**The River Dart  
No1**

21 x 29cm,  
framed size  
22 x 30cm  
Acrylic paint  
on card

HUGO LINES  
£765

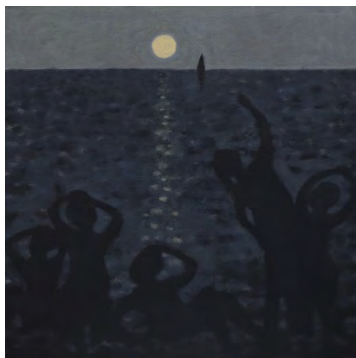


***The Sailing Boat***

Acrylic paint on canvas  
50 x 50 x 2cm  
Framed 53.5 x 53.5 x 3.1cm  
Framed and ready to hang  
Signed on the back

**HUGO LINES**

£1,122



***The Walk Home***

Acrylic paint on canvas  
50 x 50 x 2cm  
Framed 53.5 x 53.5 x 3.1cm  
Framed and ready to hang  
Signed on the back

**HUGO LINES**

£1,122



***Night Journey***

Oil on canvas (framed)  
50 x 50cm (image),  
65 x 65cm (including frame)

**ISAO MIURA**

£2,040

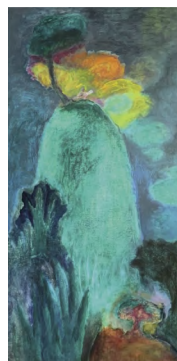


***The Most Beautiful Place  
in the World to Read  
a Book***

Oil on canvas (framed)  
122 x 61cm (image),  
127.5 x 87.5cm (including  
frame)

**ISAO MIURA**

£2,448



***Greeting the Dove***

Oil on canvas (framed)  
43 x 43cm (image), 57 x  
57cm (including frame)

**ISAO MIURA**

£2,448



***Under the Tree of His  
Imagination***

Oil on canvas (unframed)  
80 x 80cm

**ISAO MIURA**

£1,938



***The Waterfall***  
*(a Japanese Boro painting)*  
 Oil on canvas (unframed)  
 150 x 50cm

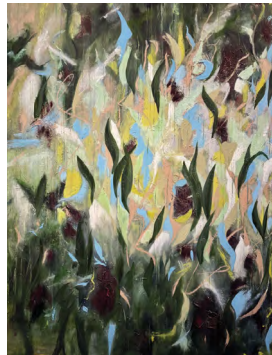
**ISAO MIURA**  
 £2,448



***Joyful Morning***  
 Oil on canvas  
 (unframed)  
 40 x 55.5cm

**ISAO MIURA**  
 £1,530

***Jungles II***  
 120 x 90cm  
**JENNY COWDEROY**  
 £2,499

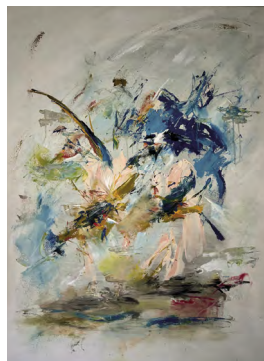


***The Circle***  
 120 x 90cm

**JENNY COWDEROY**  
 £3,315

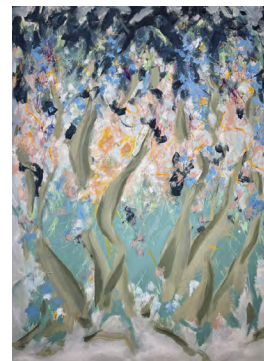


***Rites of Spring***  
 100 x 76cm  
**JENNY COWDEROY**  
 £3,009



***Dreaming***  
 120 x 90cm

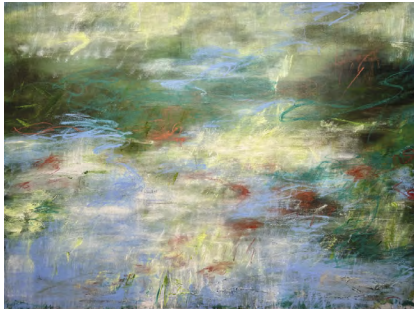
**JENNY COWDEROY**  
 £3,315





**Alluvion**  
90 x 120cm

**JENNY COWDEROY**  
£3,315



**Downstream**  
90 x 90cm

**JENNY COWDEROY**  
£1,989



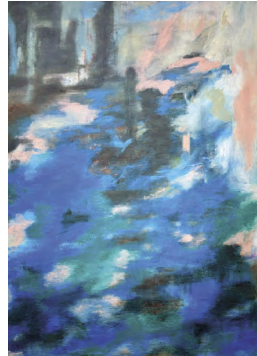
**Brightening II**  
75 x 100cm

**JENNY COWDEROY**  
£2,499



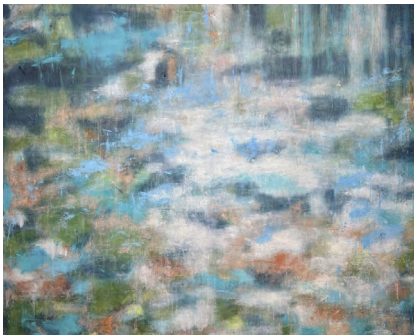
**Reflections III**  
120 x 90cm

**JENNY COWDEROY**  
£3,315



**Alluvion II**  
120 x 150cm

**JENNY COWDEROY**  
£4,029



**Flux**  
75 x 75cm

**JENNY COWDEROY**  
£1,683



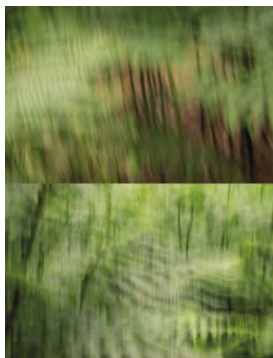
**Forest Landscape #3, 2022**

*Edition of 5 multi-composite,  
archival pigment prints on paper  
82 x 120cm*

*All works are sold unframed.  
Framing can be arranged  
by the artist at an additional cost.  
SWG Limited Edition of 5*

**MAL LEYLAND**

£1,530



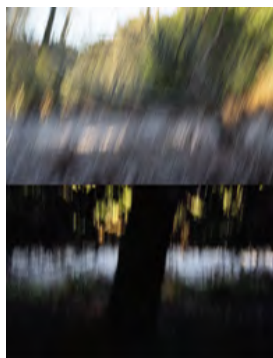
**Forest Breathe Winter, 2024**

*Edition of 5 multi-composite,  
archival pigment prints on paper  
82 x 120cm*

*All works are sold unframed.  
Framing can be arranged  
by the artist at an additional cost.  
SWG Limited Edition of 5*

**MAL LEYLAND**

£1,530



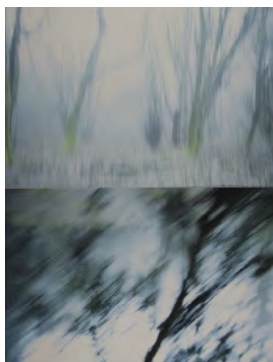
**Forest Breathe #11, 2021**

*Edition of 5 composite archival  
pigment prints on paper  
82 x 120cm*

*All works are sold unframed.  
Framing can be arranged  
by the artist at an additional cost.  
SWG Limited Edition of 5*

**MAL LEYLAND**

£1,530



**Fruit n' Veg**

*Oil on canvas sheet  
22.5 x 29.5cm*

**WILL SUDDING**

£317



**The Balcony in Verona**

*Oil on canvas sheet  
22.5 x 29.5cm*

**WILL SUDDING**

£317



**The Vespa**  
Oil on canvas sheet  
22.5 x 29.5cm

**WILL SUDDING**  
£357



**Maria**  
Oil on skimboard  
51 x 105cm

**WILL SUDDING**  
£3,264

**Place des Dénicheurs**  
Oil on canvas sheet  
22.5 x 29.5cm

**WILL SUDDING**  
£317



**Cocktails II**  
Oil on skimboard  
1 x 1.2m

**WILL SUDDING**  
£13,260

**Waving Cat**  
Pen on paper  
(thick watercolour paper)  
75.5 x 105.5cm

**WILL SUDDING**  
£3,264



**Cocktails**  
Oil on skimboard  
1 x 1.5m

**WILL SUDDING**  
£23,460



**A group of letters and gaps that make no sense (created using the letters in this title)**

Resin + acrylic paint  
H 54cm W 57.5cm D 10cm  
All works 1 of 50 SWG Limited Edition. Each piece is individually made and will be sent on post pop-up, upon payment

**JON RAINE**  
£816



**A group of letters and gaps that make no sense – veil (created using the letters in this title)**

Resin + acrylic paint  
H 54cm W 57.5cm D 10cm  
All works 1 of 50 SWG Limited Edition. Each piece is individually made and will be sent on post pop-up, upon payment

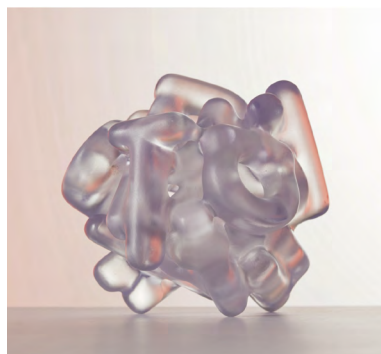
**JON RAINE**  
£816



**That should be clear (created using the letters in this title) brain size**

Resin and acrylic lacquer  
H 16cm W 16cm D 15cm  
All works 1 of 50 SWG Limited Edition. Each piece is individually made and will be sent on post pop-up, upon payment

**JON RAINE**  
£612



**Gobbledygook (created using the letters in this title)**

3D printed sculpture – acrylic paint  
H 28cm W 28cm D 25cm  
All works are 1 of 50 SWG Limited Edition. Each piece is individually made and will be sent on post pop-up, upon payment

**JON RAINE**  
£969



**Can't see the words for the text (created using the letters in this title)**

3D printed sculpture – acrylic paint  
H 15cm W 8cm D 2cm  
All works 1 of 50 SWG Limited Edition. Each piece is individually made and will be sent on post pop-up, upon payment

**JON RAINE**  
£179

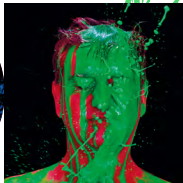


**Gobbledygook (created using the letters in this title) brain size**

3D printed sculpture – acrylic paint  
H 16cm W 16cm D 15cm  
All works 1 of 50 SWG Limited Edition. Each piece is individually made and will be sent on post pop-up, upon payment

**JON RAINE**  
£612





## SILVERLOCK WARD Pop-up art gallery

### Contact

To sign up and register for invitations to future pop-ups, please email – see below.

Please do get in contact to speak about:

- Our artists
- Work for sale
- Commissions
- Corporate client exhibitions
- Private client exhibitions
- Pop-up venues
- Press
- Being represented by SWG

### Get in touch

Co-Founder & Curator Chris Ward  
[chris@silverlockwardgallery.london](mailto:chris@silverlockwardgallery.london)  
**07973 548 766**

Co-Founder & Curator Nicki Murphy  
[nicki@silverlockwardgallery.london](mailto:nicki@silverlockwardgallery.london)  
**07917 083 236**